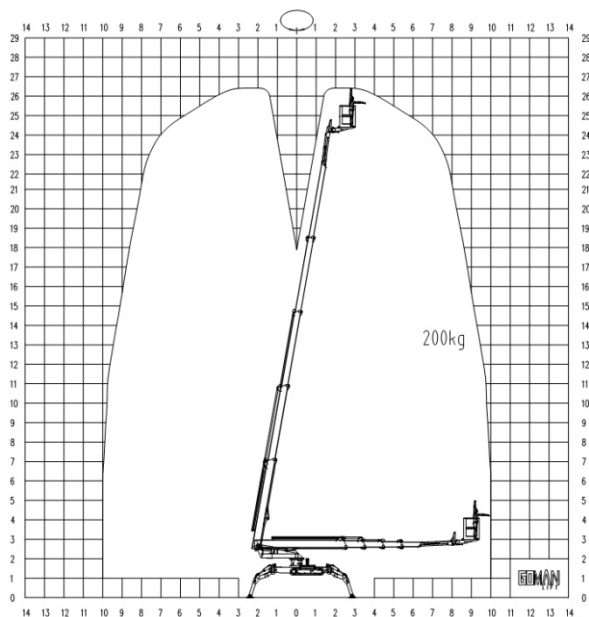




**Standard Parameters**

Model	<b>T26</b>	<b>GT85</b>
Max. work height	26.00m	85'
Max. platform height	24.00m	79'
Load capacity	200kg	440lb
Lateral Outreach	12m	39'
Basket rotation	180°	
Jib rotation	120°	
Turntable rotation	360° non continuous	
Size of platform	1.2*0.8m	47" x 32"
Overall stowed length	6.86 m	270"
Overall stowed width	1.62m	64"
Overall stowed height	2.03m	80"
Outrigger support size (Wide leg)	5.94*5.47m	234" x 215"
Outrigger support size (Narrow leg)	5.47*4.96m	215" x 195"
Total weight	4595kg	10,130lb
Driving speed km/h	0-3.0	
Max. work slope	20%	
Max. climbing ability	30%	
Dual Power capacity	220v AC power + Diesel engine	

**Working radius**



**Standard Features**

- ▶ Compact design; various working application
- ▶ Detachable Basket
- ▶ Auto-leveling basket and outriggers
- ▶ Basket and ground operation are possible
- ▶ 360°non-continuous turntable rotation
- ▶ Hydraulically arms and outrigger interlocks
- ▶ Weight dispersal low ground pressure
- ▶ Made of high tensile steel
- ▶ Reach standards of ISO, CE and ANSI