

GOMAN LIFT Spider X12

GX39

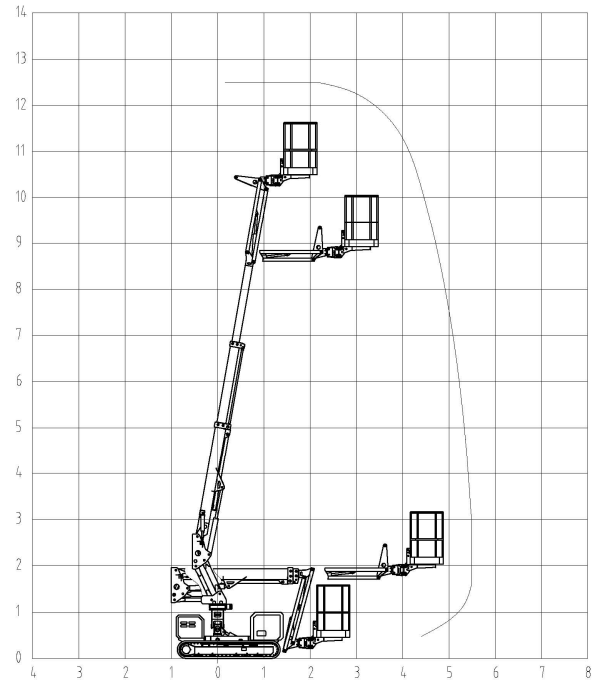


X12

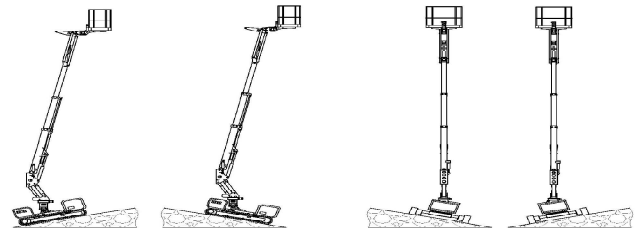
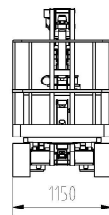
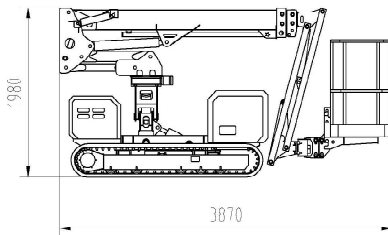
Spider X12 (GX39)

Standard Parameters

Model	X12	GX39
Max. work height	12.00m	39'
Max. platform height	10.00m	33'
Load capacity	200kg	441lb
Max. working radius	5.50m	18'
Size of platform	1.4*0.7*1.1m 55" x 28" x 43"	
Overall stowed length	3.87m	152"
Overall stowed width	1.15m	45"
Overall stowed height	1.98m	78"
Total weight	2890kg	6371lb
Driving speed km/h	0-4.0	
Max. work slope	20%	
Max. climbing ability	30%	
Standard Power	Lithium Battery 24V + Gasoline Engine	



Technical data



Standard Features

- ▶ Low ground pressure due to light weight, easy to turn around.
- ▶ HMI LCD display, double CPU for redundant control.
- ▶ Full proportional control
- ▶ Self-leveling platform
- ▶ Emergency descend system
- ▶ 360° continuous turntable rotation
- ▶ High driving speed
- ▶ Made of high tensile steel
- ▶ double axles adjustable
- ▶ With ISO9001 and CE-approval ISO CE

